



60°

50.35

50.35

6.20

7.30

32.40

51.10

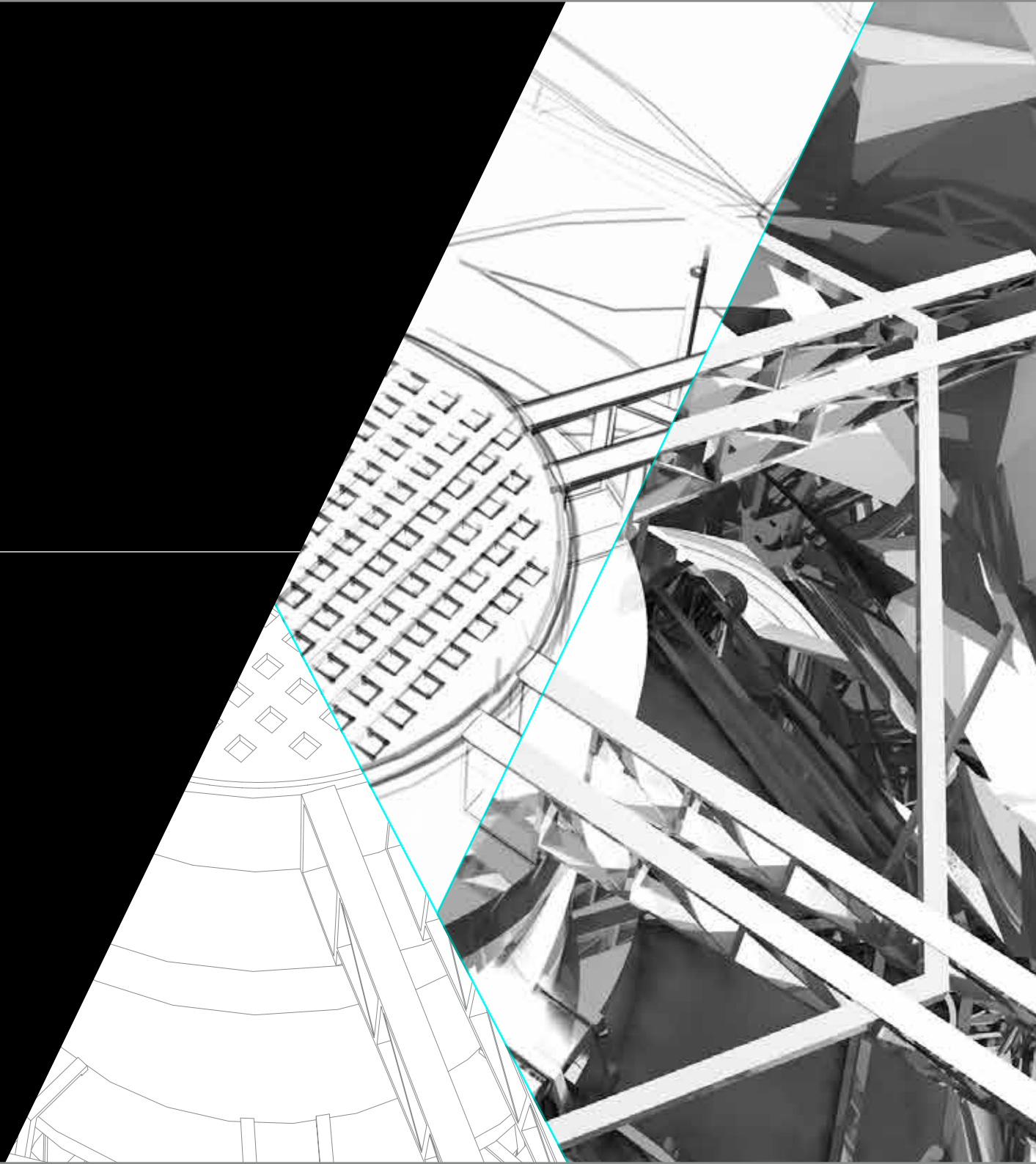
ST 17H



VECTORWORKS®  
ARCHITECT

TRANSFORM THE WORLD.

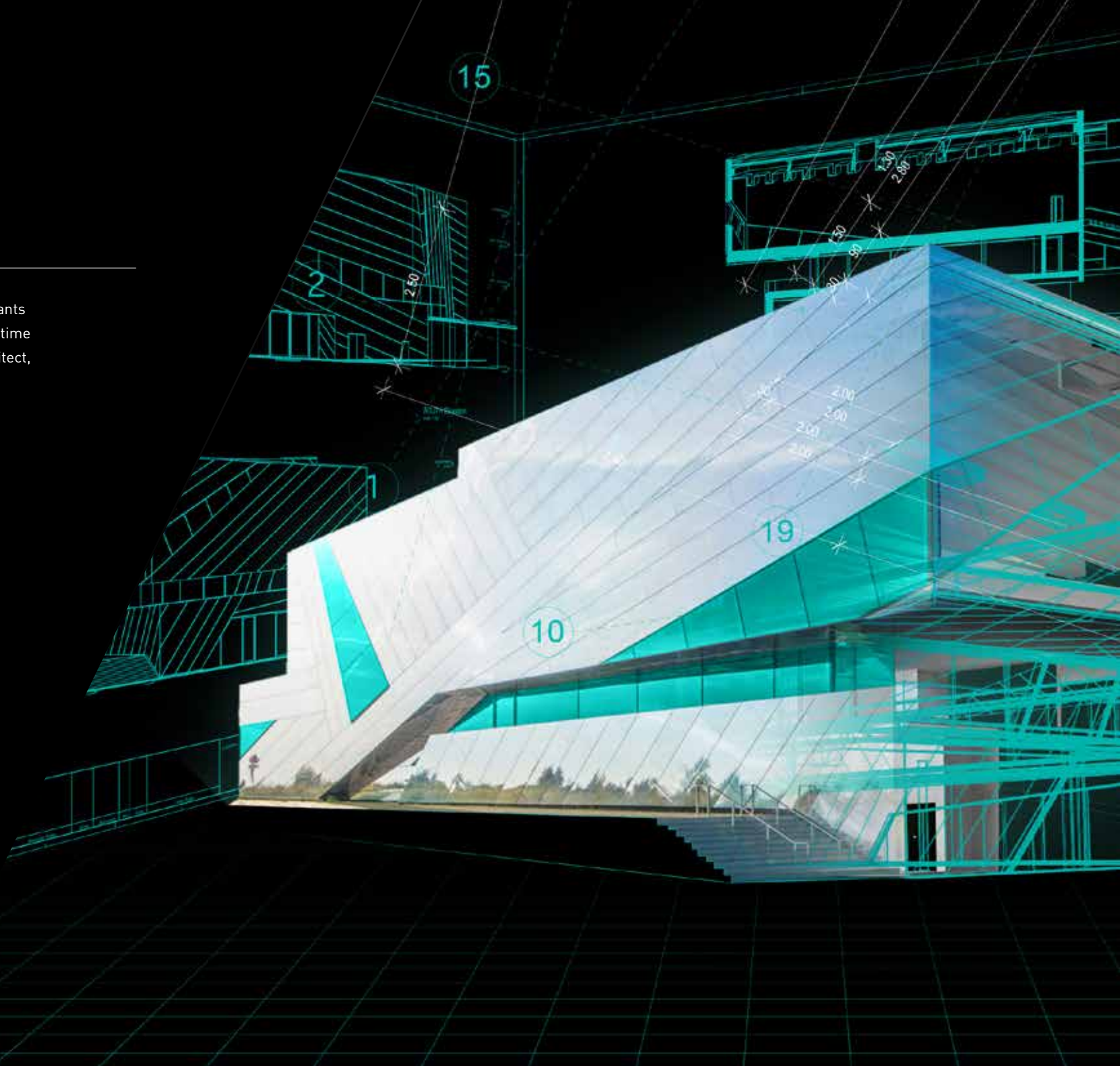
# DESIGN WITH VECTORWORKS ARCHITECT.

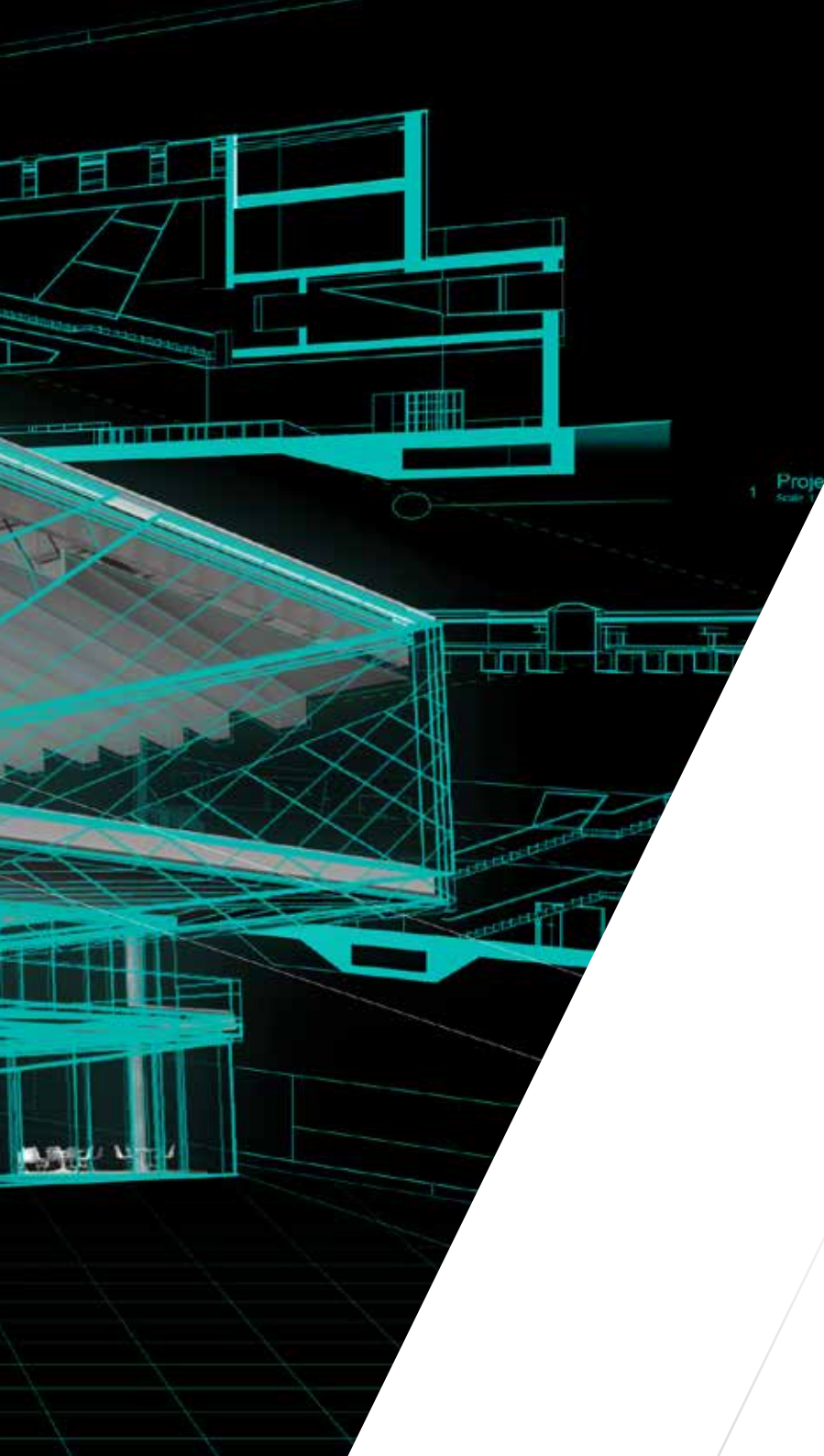


Designers choose **Vectorworks® Architect** software because they want a solution that supports their creative process instead of replacing it. As the architect's BIM tool, Vectorworks Architect delivers an exciting suite of capabilities that will enhance your workflows and improve your design process. From 2D and 3D to BIM and beyond, Vectorworks Architect supports you and your project team seamlessly, from concept to construction.

# SIMPLIFY YOUR PROCESS

Your time is valuable — and Vectorworks wants to make sure you get to spend more of that time designing. When you use Vectorworks Architect, you can work faster and more efficiently.





# THE ARCHITECT'S **BIM TOOL**

Vectorworks Architect is purpose-built to create building information models without changing your preferred design process. Whether you're looking to streamline costs, analyze materials, or increase your energy efficiency while creating world-class designs, our software provides an efficient way to maximize your BIM capabilities.

SIMPLIFY YOUR PROCESS



# POWERFUL RESOURCE MANAGEMENT

Vectorworks software's Resource Manager puts the ability to create, edit, and apply desired resources to your designs at your fingertips. Featuring direct browsing of resources from multiple content locations, the Resource Manager also includes access to the Vectorworks Service Select online libraries for subscribers. Easily find what you need with powerful searching and filtering, attach keyword tags, and access your resources directly from Vectorworks software's parametric tools.





# ENHANCE YOUR WORKFLOW

Vectorworks 2017 gives you more resources than ever to optimize your workflow. Whether you're creating a BIM model or designing in 2D, Architect software offers features and improvements that are designed with you and your workflows in mind.





# CREATIVE MODELING SOLUTIONS

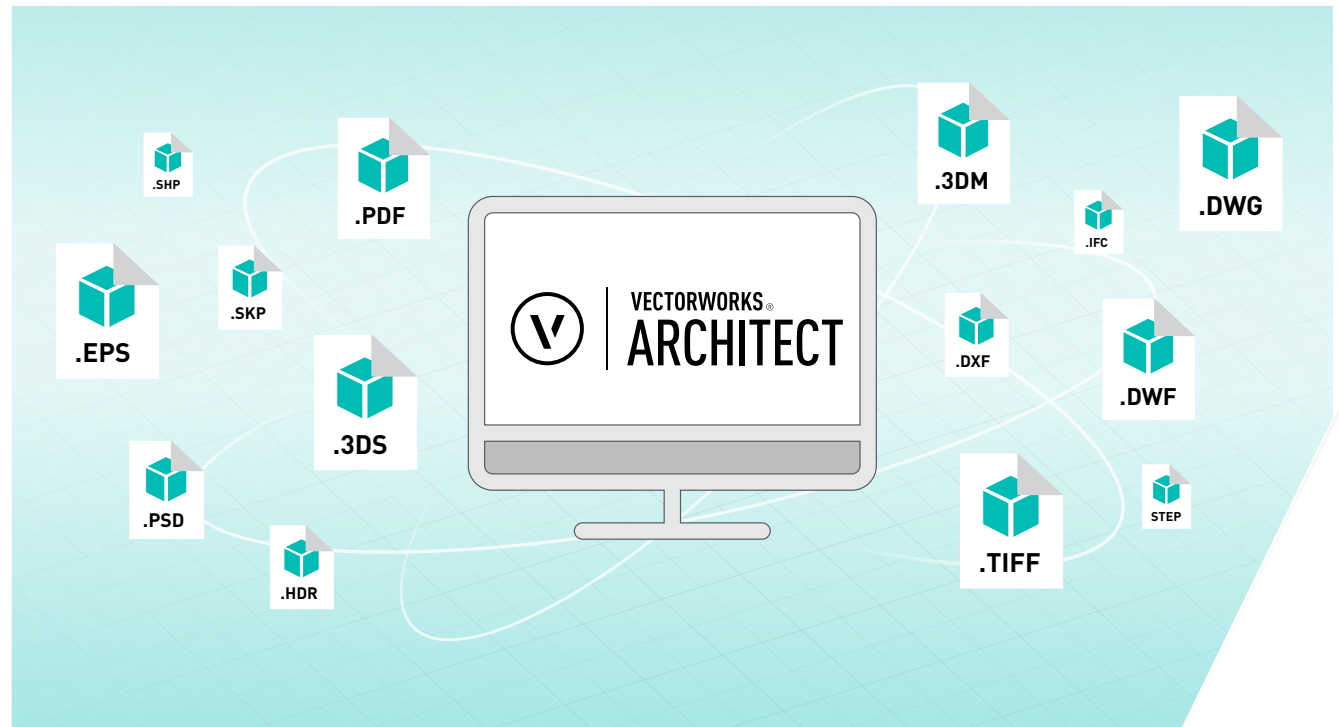
Design without limitations. Our first-in-industry, cross-platform graphical scripting capabilities offer new ways to explore form and function. Architect also provides our SmartCursor™ technology that gives you hints to design more accurately, as well as subdivision modeling tools that transform primitive shapes into smooth, malleable surfaces so you can craft sculpted objects, unique furniture, and more. With our software, you can create any form.

IMAGE COURTESY OF HAMONIC + MASSON & ASSOCIÉS.

# SEAMLESS INTEROPERABILITY

If you or your collaborators are not modeling in Vectorworks, Architect's extensive support for alternative file formats makes it easy to work seamlessly between programs. Exchange NURBS models with Rhino or concept models from Sketchup®. Support of both import and export of OBJ, STL, 3DS, and SKP file formats lets you explore the full range of design options by incorporating information from multiple sources, making sweeping changes quickly and easily.

Using IFC, an industry-standard file format, communicate effectively with your consultants and collaborators who may be using Revit® or other BIM software—or use your model for clash detection and model checking. Vectorworks Architect supports IFC, gbXML, DWG/DXF, Revit, PDF, and more for document and model exchange.



## VECTORWORKS ARCHITECT FILE IMPORT/EXPORT CAPABILITIES

| File Type                                 | Import | Export |
|---|--------|--------|
| 3D PDF                                    |        | ●      |
| 3DS                                       | ●      | ●      |
| BCF                                       | ●      | ●      |
| Cinema 4D (.C4D)                          |        | ●      |
| Collada                                   |        | ●      |
| CSV                                       |        | ●      |
| DWG/DXF/DWF                               | ●      | ●      |
| FBX                                       | ●      | ●      |
| gbXML                                     |        | ●      |
| GIS (.SHP)                                | ●      | ●      |
| HDR                                       | ●      | ●      |
| IFC (Industry Foundation Classes)         | ●      | ●      |
| IGES                                      | ●      | ●      |
| Illustrator (.EPS)                        | ●      | ●      |
| IMAGE FILES<br>(GIF, BMP, TIFF, JPG, PNG) | ●      | ●      |

| File Type        | Import | Export |
|------------------|--------|--------|
| KML              |        | ●      |
| MOV              |        | ●      |
| OBJ              | ●      |        |
| Parasolid X-T    | ●      | ●      |
| PDF              | ●      | ●      |
| PDF/A            | ●      | ●      |
| Photoshop (.PSD) | ●      | ●      |
| Point Cloud      | ●      |        |
| Python Script    | ●      | ●      |
| Rhino (.3DM)     | ●      | ●      |
| RVT/RFA          | ●      |        |
| SAT              |        | ●      |
| SketchUp (.SKP)  | ●      |        |
| STEP             | ●      | ●      |
| STL              | ●      | ●      |


ENHANCE YOUR WORKFLOW

# POINT CLOUD SUPPORT

---

Replace field surveys with integrated point cloud support. Using your preferred 3D scanning device, you can capture any physical location and import a 3D point cloud object directly to Vectorworks Architect using PTS, E57, LAS, LAZ, and XYZ file formats. From there, you can model and measure, creating entirely new structures or renovating existing architecture.





# RESPONSIVE

## ENERGY TOOLS

---

Our Energos feature is a powerful energy analysis tool for architects, empowering you to make sustainable design decisions throughout the design process. Based on the Passivhaus calculation method, the Energos module gives you—and your clients—a dynamic, intelligent gauge of a building's energy performance.

# SUPERIOR DOCUMENTATION

Vectorworks software's extensive suite of drawing and editing tools help you produce beautiful drawings and high-quality, professional documentation with ease. Define your signature look and meet industry standards with Vectorworks Architect's precision drafting tools, intelligent objects for building, detailing, MEP, furniture, millwork, machine parts, and annotations, plus thousands of free symbols from leading building product companies. Batch print drawing sets or export them as multipage PDFs at full or reduced size.





# COORDINATE WITH YOUR PROJECT TEAM

Vectorworks 2017 is engineered to facilitate your collaborative workflows. Design, document, and exchange your models within your firm and beyond with Revit Import capabilities, IFC4 support, a new BCF manager, and Raster PDF capabilities.

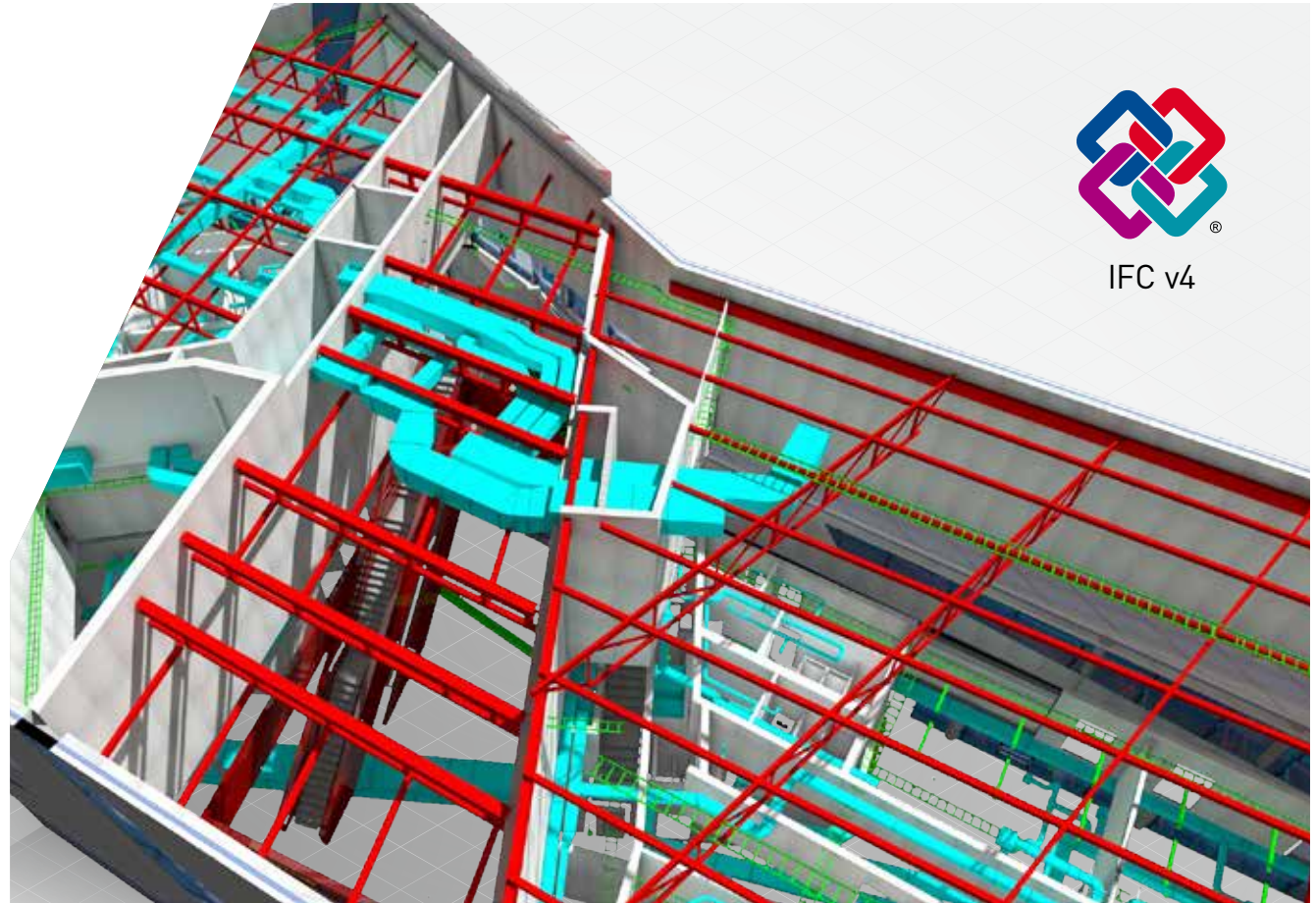




# MULTIUSER ENVIRONMENT

Collaborate and maximize efficiency. Project sharing provides customizable multiuser workflows allowing your project team to work on the same Vectorworks file concurrently. It also frees designers to work anywhere any time with cloud integration, letting you save your files in your Dropbox, OneDrive, Box, and Google Drive accounts.

IMAGE COURTESY OF N2M ARCHITEKTEN.

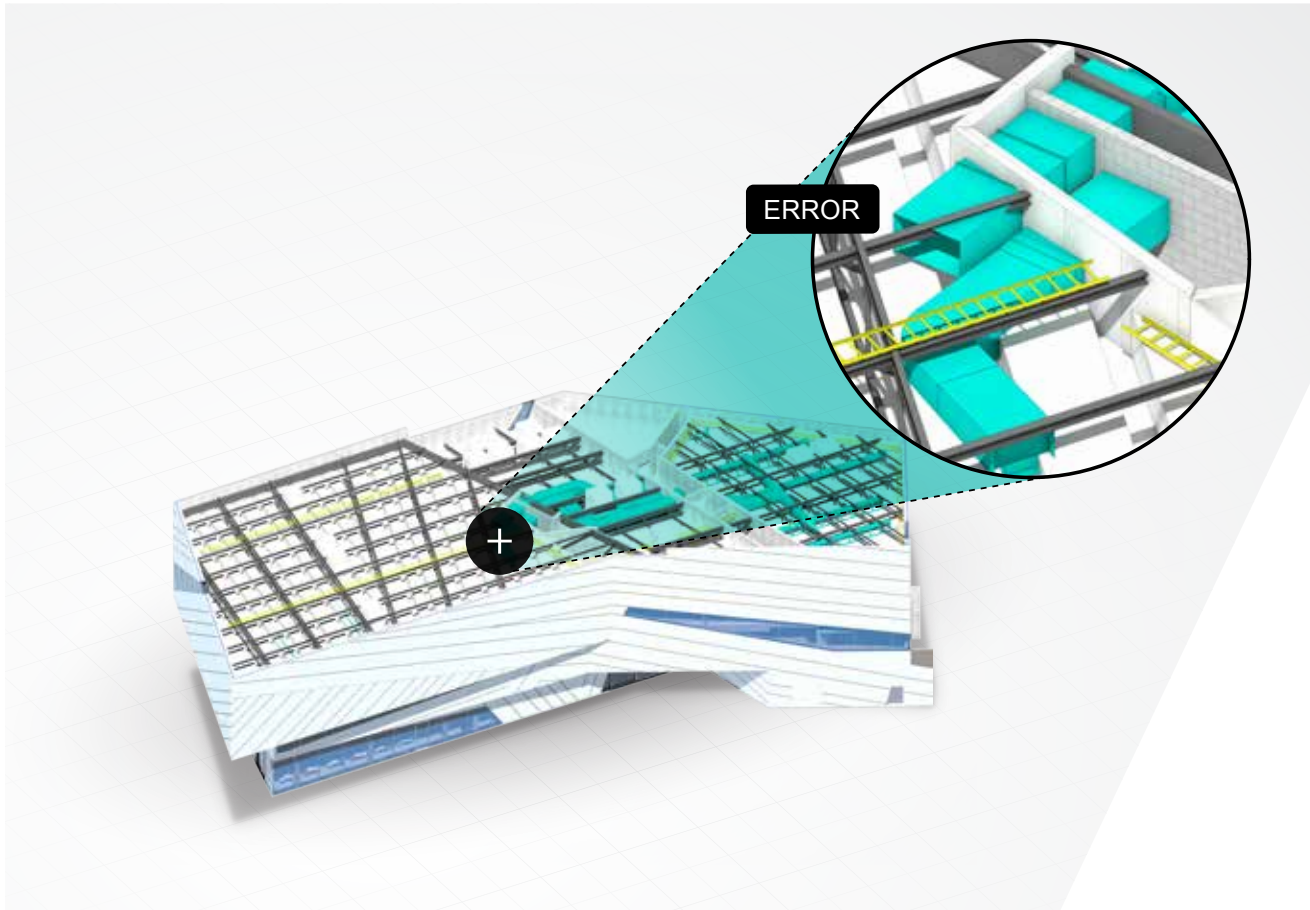


# IFC SUPPORT FOR OPEN BIM

Using IFC, an industry standard file format, communicate effectively with your consultants and collaborators who may be using Revit® or other BIM software.

# BCF MANAGER

---



As part of our continued support of open BIM workflows, the BCF manager, available directly in Vectorworks Architect software, equips project teams with the resources to share, edit, and assign issues or clashes that have been discovered. You can export BCF files that can contain revisions, notes, or new issues.

# SHARE YOUR VISION

Good communication is key to your design process, and with Vectorworks 2017, you have more options than ever to share your ideas and inspiration.



DESIGNER



CONSULTANT



# CLOUD SERVICES

Vectorworks is committed to communication and collaboration. In Vectorworks 2017, our Cloud Services environment is openly available to everyone, giving you the ability to easily share files between team members and providing a simple interface for collaborators and clients to tour your models using our mobile app, Vectorworks Nomad.

## WEB VIEW AND **VIRTUAL REALITY**

---



Easily share your designs with current clients and collaborators using Vectorworks software's immersive web viewing and virtual reality features. Generate a link that allows anyone, anywhere, to view your model in 3D on any device.



# INSPIRE YOUR CLIENTS

With stunning, photorealistic and artistic rendering capabilities and powerful tools for creating inspirational presentations, Vectorworks Architect gives you everything you need to wow your clients.







# INTEGRATED RENDERING

All Vectorworks software packages include Renderworks, the best-in-industry rendering feature set built on the award-winning Cinema 4D render engine. Renderworks provides the tools necessary to visualize your work throughout the design process while producing clear and accurate illustrations.



IMAGE INSPIRED BY **HOLZER KOBLER ARCHITEKTUREN**. RENDERING BY **LMCAD STUDIO**.

# POWERFUL PRESENTATIONS

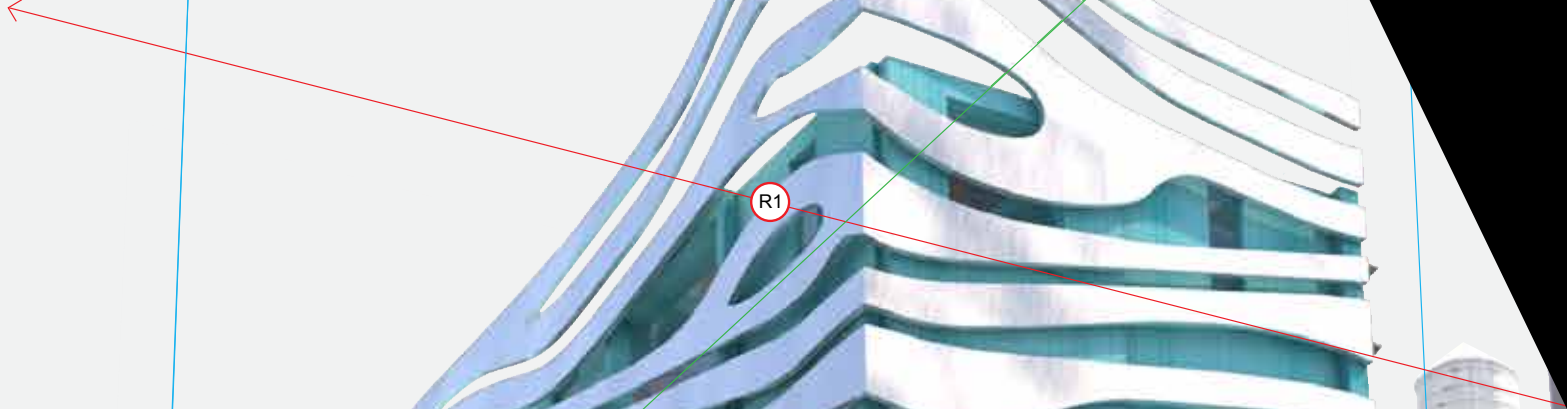
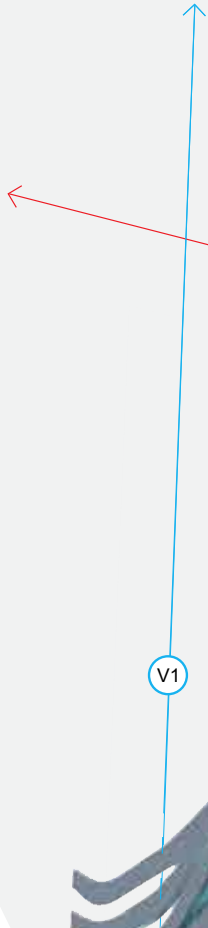
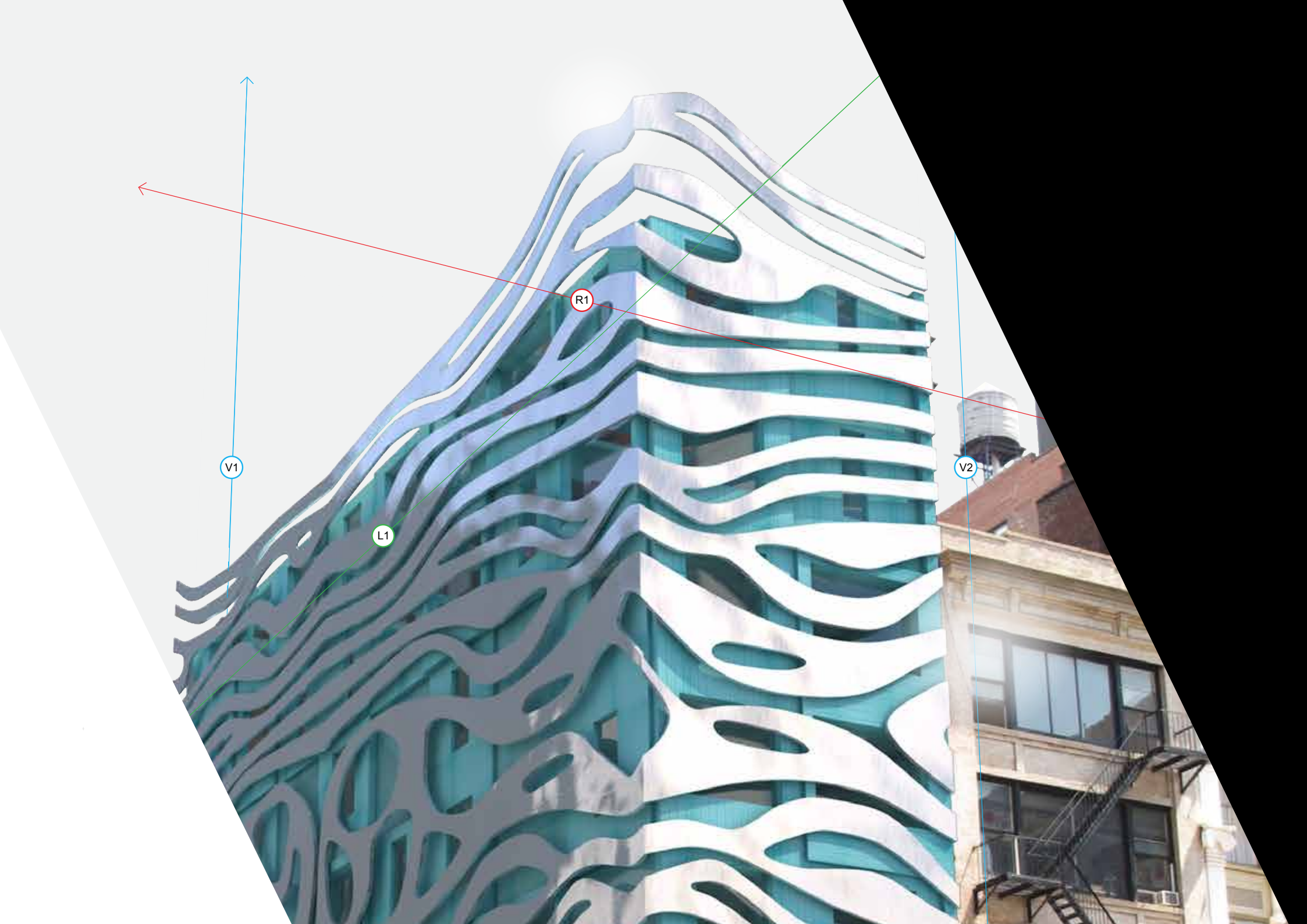
---

Vectorworks software provides architects with a comprehensive “what you see is what you get” suite of design tools built to create the industry’s best 2D presentations. Fine-tune line weights, adjust color opacity, and add drop shadows to produce stunning presentations—all from within Vectorworks Architect’s intuitive interface.

# CAMERA MATCH

---

With the new Camera Match features in Vectorworks 2017, designers can integrate photos taken on-site with their model, generating realistic adaptations of those images by matching the perspective vanishing lines in the photo with those in the model. From there, you can create custom shadows, mask out other elements, and tailor the photo to your design vision without the need for an external editing application.



V1

L1

R1

V2



# SYSTEM RECOMMENDATIONS

---

Mac OS X 10.10

Mac OS X 10.11

Windows 7 SP 1 (64-bit)

Windows 8 (64-bit)

Windows 8.1 (64-bit)

Windows 10 (64-bit)

64-bit Intel Core i5

(or AMD equivalent) or better

## RAM

4GB minimum

8GB recommended

8GB-16GB recommended for large  
files and complex renderings

## Graphics\*

A dedicated graphics card is required

OpenGL 2.1 compatible graphics card

VRAM: 1GB minimum, 2GB-

4GB recommended

## Screen Resolution

1440x900 minimum

1920x1080 or higher recommended

\* Several Vectorworks features have placed higher demands on graphic hardware. Additionally, the performance and quality of the graphics provided by the Vectorworks Graphics Module depend directly on the speed, memory, and supported extensions of the graphics card. These new features have the potential to provide a very fast and fluid experience if used on capable hardware, or a noticeably slower experience if used on older or incompatible hardware. Graphic cards should support at a minimum OpenGL version 2.1; cards not meeting this recommendation will have limited functionality and poor performance, particularly when rendering in OpenGL mode. In general, the more powerful your video card is, the better your Vectorworks experience will be.

For the most current and updated technical information, please visit our Knowledgebase at [kbase.vectorworks.net](http://kbase.vectorworks.net). See [vectorworks.net/sysreq/](http://vectorworks.net/sysreq/) for updated information.

# ABOUT VECTORWORKS

---

Vectorworks cares about design. Since 1985, we have served the architecture, landscape, and entertainment industries, drawing inspiration from the world around us and encouraging the more than 650,000 designers who use our software to create experiences that transform the world.

Our commitment to develop the world's best cross-platform design software has taught us a simple truth: great design begins with the inspiration of the designer. Vectorworks supports that inspiration by guiding the exploration of discovery and finding creative solutions. We provide powerful tools to help designers capture ideas, nurture innovation, communicate effectively, and realize their vision.

We serve those who desire to create experiences that are memorable and build things that truly matter. We recognize that great design is about revealing opportunities that explore the unexpected, while fully satisfying the demands of an increasingly complex world. We acknowledge the value of a designer's dream and strive to facilitate the creation of something that's truly appreciated and uniquely positioned to express the best in the built environment.



VECTORWORKS, INC.

7150 Riverwood Drive, Columbia, MD 21046-1295 USA

[vectorworks.net](http://vectorworks.net)

T 410.290.5114

©2016 Vectorworks, Inc. All rights reserved.

Vectorworks and Renderworks are registered trademarks of Vectorworks, Inc.



For Sales and Training Enquiries, Please Contact:  
MC2 Design Ltd  
Tel: 08004332117  
E- Mail: [info@mc-2-design.com](mailto:info@mc-2-design.com)  
Web: [www.mc-2-design.com](http://www.mc-2-design.com)